



Project Description

Situated in Ano Glyfada, one of the most desirable residential areas of the Athenian Riviera, this contemporary development combines refined architecture, modern living, and the unique character of an exceptional neighborhood. Surrounded by a peaceful atmosphere, premium amenities, and just moments away from the coastline, Ano Glyfada offers the perfect balance between comfort, convenience, and elevated urban living.

The project extends across six levels, featuring thoughtfully designed residences that emphasize functionality, natural light, and contemporary aesthetics. Each residence has been carefully crafted to offer a sophisticated living experience in one of Athens' most sought-after locations.





Energy Efficiency

Pending



Heating

Pending



Sanitary Ware

Grohe



Kitchens

European



Delivery

Pending



Unit Number	Level	Type	Internal Area	Balconies/ Exclusive Use	Total	Bedrooms	Bathrooms	Parking	Storage	Price €
GF.1	0	Apartment	37,8m ²	15m ²	52,8m ²	1	1	N/A	N/A	283000
GF.2	0	Apartment	37,8m ²	11m ²	48,8m ²	1	1	N/A	N/A	281000
GF.3	0	Apartment	35,8m ²	23,5m ²	59,3m ²	1	1	N/A	N/A	272000
GF.4	0	Apartment	34,8m ²	25,5m ²	60,3m ²	1	1	N/A	N/A	264000
GF.5	0	Apartment	34,8m ²	76,5m ²	111,3m ²	1	1	N/A	N/A	280000
M1	0 & 1	Marionette	41m ²	13m ²	54m ²	1	1	N/A	N/A	307000
1.1	1	Apartment	35,3m ²	22m ²	57,3m ²	1	1	N/A	N/A	276000
1.2	1	Apartment	35,3m ²	19m ²	54,3m ²	1	1	N/A	N/A	275000
1.3	1	Apartment	35,3m ²	4m ²	39,3m ²	1	1	N/A	N/A	264000
1.4	1	Apartment	34,8m ²	6m ²	40,8m ²	1	1	N/A	N/A	261000
1.5	1	Apartment	35,3m ²	17m ²	52,3m ²	1	1	N/A	N/A	274000

Sqm measurements may vary up to ± 3%
+ 3 months grace period



Unit Number	Level	Type	Internal Area	Balconies/ Exclusive Use	Total	Bedrooms	Bathrooms	Parking	Storage	Price €
2.1	2	Apartment	35,3m ²	11m ²	46,3m ²	1	1	N/A	N/A	273000
2.2	2	Apartment	35,3m ²	9m ²	44,3m ²	1	1	N/A	N/A	270000
2.3	2	Apartment	35,3m ²	4m ²	39,3m ²	1	1	N/A	N/A	266000
2.4	2	Apartment	34,8m ²	6m ²	40,8m ²	1	1	N/A	N/A	264000
2.5	2	Apartment	35,3m ²	17m ²	52,3m ²	1	1	N/A	N/A	278000
M2	2 & 3	Apartment	41,3m ²	12m ²	53,3m ²	1	1	N/A	N/A	311000
3.1	3	Apartment	35,3m ²	11m ²	46,3m ²	1	1	N/A	N/A	276000
3.2	3	Apartment	35,3m ²	9m ²	44,3m ²	1	1	N/A	N/A	273000
3.3	3	Apartment	35,3m ²	4m ²	39,3m ²	1	1	N/A	N/A	270000
3.4	3	Apartment	34,8m ²	6m ²	40,8m ²	1	1	N/A	N/A	268000
3.5	3	Apartment	35,3m ²	17m ²	52,3m ²	1	1	N/A	N/A	278000

Sqm measurements may vary up to ± 3%

+ 3 months grace period



Unit Number	Level	Type	Internal Area	Balconies/ Exclusive Use	Total	Bedrooms	Bathrooms	Parking	Storage	Price €
4.1	4	Apartment	35,3m ²	11m ²	46,3m ²	1	1	N/A	N/A	280000
4.2	4	Apartment	35,3m ²	9m ²	44,3m ²	1	1	N/A	N/A	277000
4.3	4	Apartment	35,3m ²	4m ²	39,3m ²	1	1	N/A	N/A	274000
4.4	4	Apartment	34,8m ²	6m ²	40,8m ²	1	1	N/A	N/A	271000
4.5	4	Apartment	35,3m ²	17m ²	52,3m ²	1	1	N/A	N/A	282000
M3	4 & 5	Apartment	41,3m ²	12m ²	53,3m ²	1	1	N/A	N/A	316000
5.1	5	Apartment	34,9m ²	11m ²	45,9m ²	1	1	N/A	N/A	283000
5.2	5	Apartment	34,9m ²	9m ²	43,9m ²	1	1	N/A	N/A	281000
5.3	5	Apartment	34,9m ²	4m ²	38,9m ²	1	1	N/A	N/A	278000
5.4	5	Apartment	35,3m ²	6m ²	41,3m ²	1	1	N/A	N/A	280000
5.5	5	Apartment	35,3m ²	17m ²	52,3m ²	1	1	N/A	N/A	287000

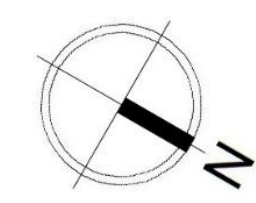
Sqm measurements may vary up to ± 3%
+ 3 months grace period

GROUND FLOOR

APT GF.1 | APT GF.2 | APT GF.3 | APT GF.4 | APT GF.5 | APT M1



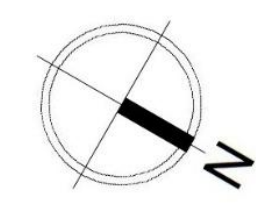
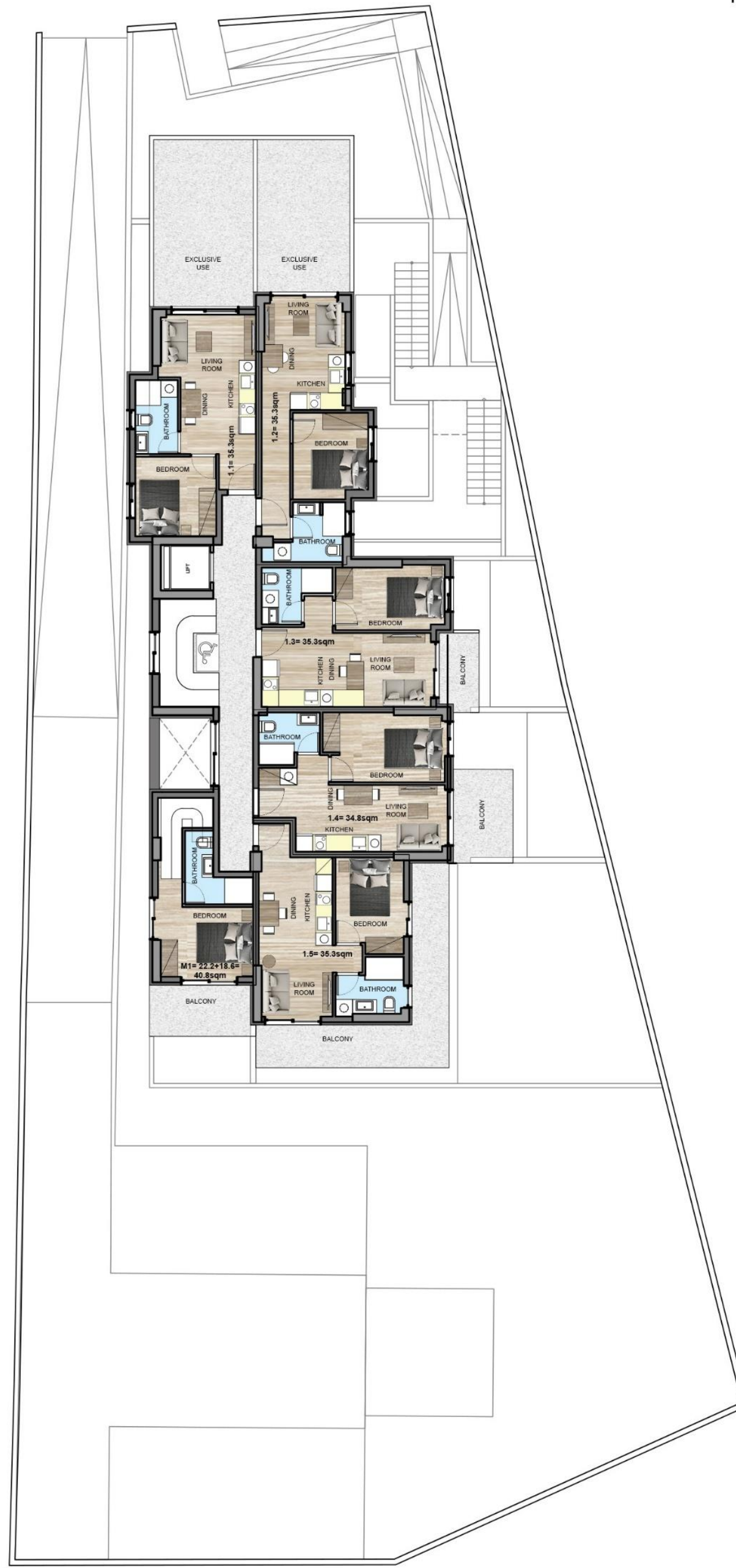
GROUND FLOOR



1st FLOOR

APT 1.1 | APT 1.2 | APT 1.3 | APT 1.4 | APT 1.5 | APT M1

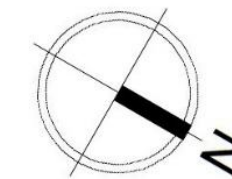




2nd FLOOR - 5th FLOOR

Typical Floors





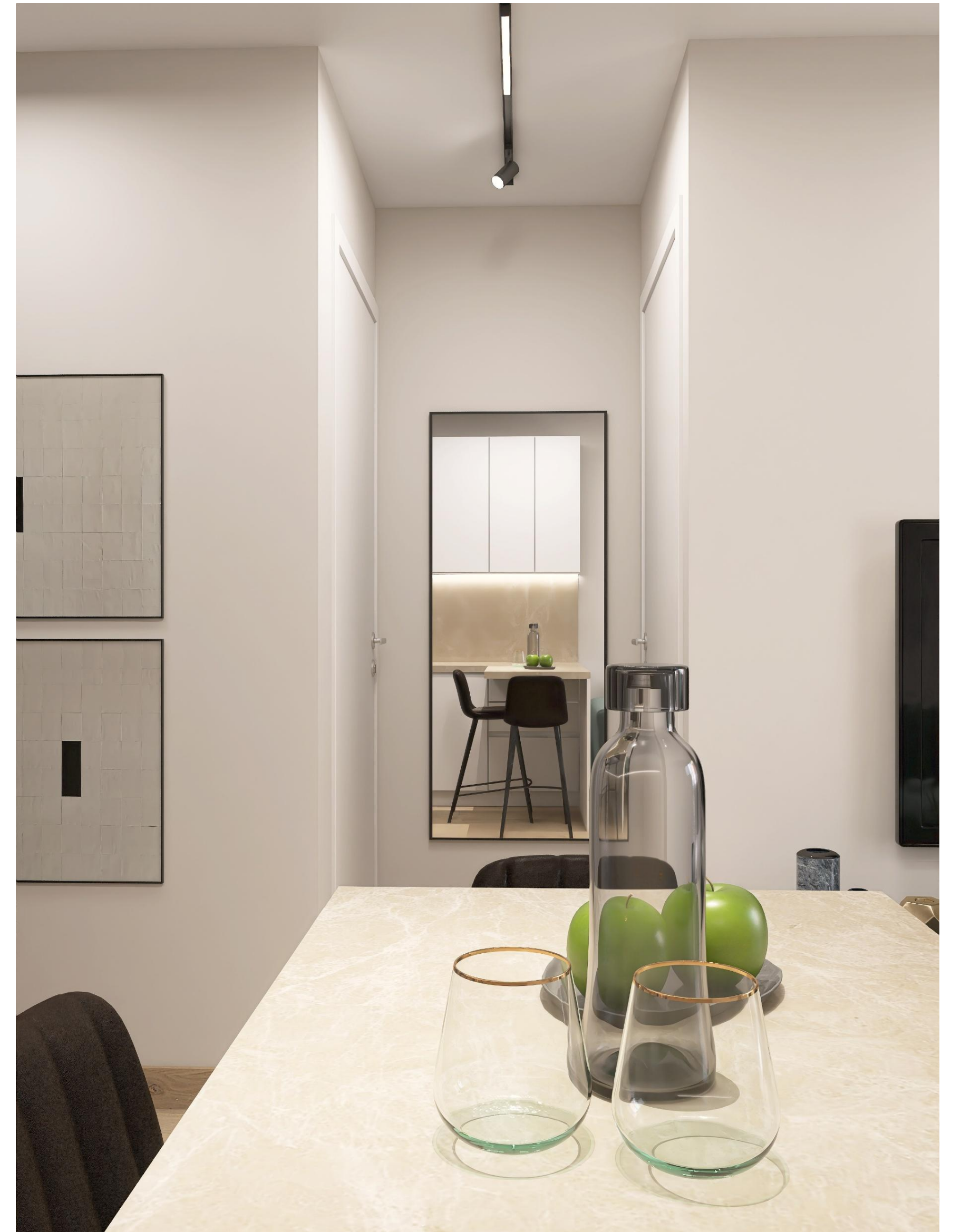
INTERIORS













The Ellinikon
Experience Park



Glyfada
Γλυφάδα

