



# TRINITY

Contemporary Residences Near the Athens Medical School

Trinity is a contemporary residential project located on Michalakopoulou Street, in a central yet relatively quiet area of Athens. The building consists of six floors and includes 20 apartments, with internal spaces ranging from 30 to 35 square meters.

Each apartment is designed with a smart and practical layout, making the most of every square meter while meeting the needs of modern urban living. All residences feature private balconies, offering natural light and a connection to the outdoor space.

Its immediate proximity to the Athens Medical School makes it an especially attractive choice for students and healthcare professionals.



# ATHENS

**The cradle of Western civilization,  
blending ancient history with modern vibrancy.**

Athens, the capital of Greece, is a city rich in history and culture. Known as the cradle of Western civilization, it was the heart of ancient Greece, home to philosophers like Socrates and Platon, and the birthplace of democracy.

Its iconic landmarks, such as the Acropolis and Parthenon, reflect its glorious past. Today, Athens is a vibrant metropolis that blends ancient heritage with modern life, featuring bustling markets, a contemporary art scene, and a lively culture. It remains a symbol of human achievement and innovation, deeply influencing art, philosophy, and politics throughout history.

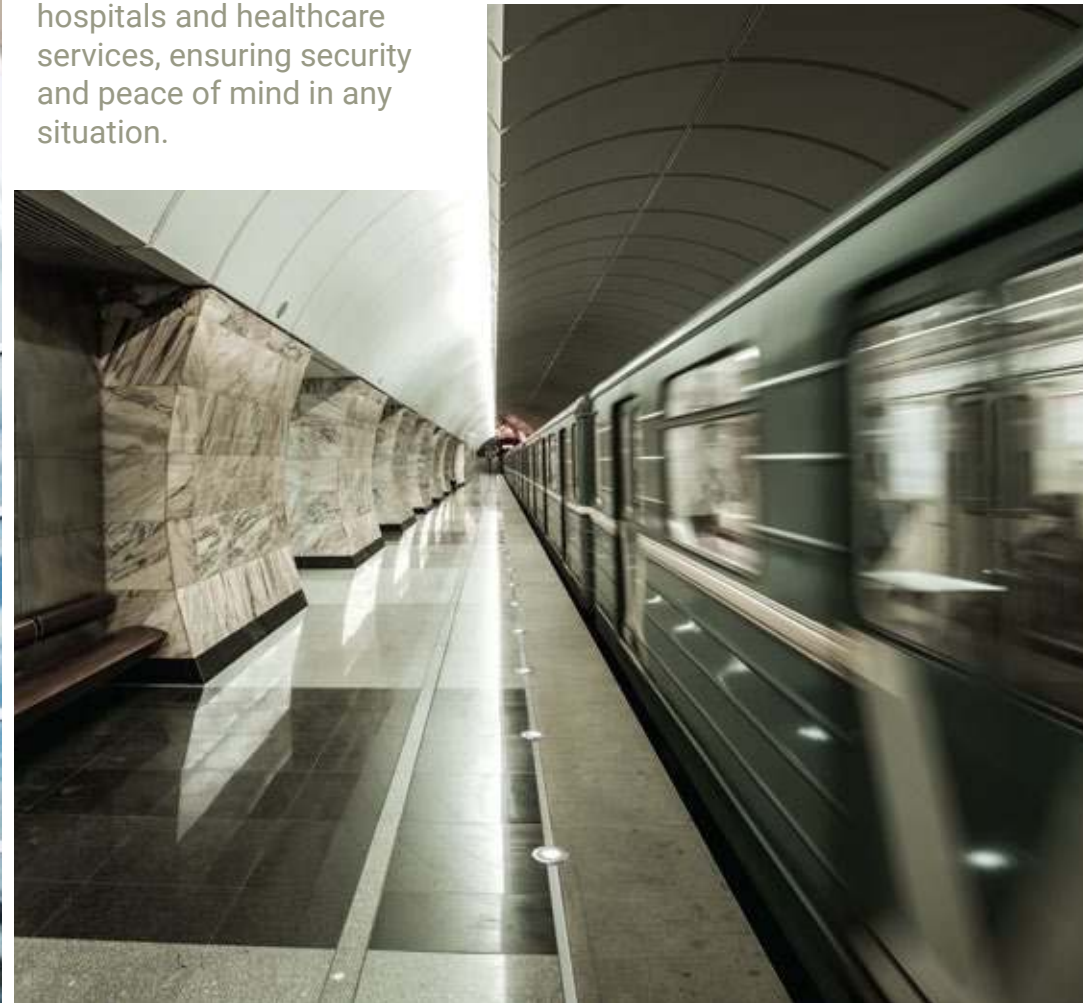


# A RESIDENTIAL POCKET WITH EXCEPTIONAL REACH

The area offers a unique combination of central location, excellent connectivity, and everyday convenience, making it highly attractive for both living and investment.

Several key metro stations, including , Megaro Moussikis Metro Station and Ambelokipi Metro Station, are all within easy reach, providing fast connections to the city centre and the airport.

Residents benefit from immediate access to major hospitals and healthcare services, ensuring security and peace of mind in any situation.



At the same time, the area is within walking distance of key city districts such as Kolonaki and Syntagma, while also being closely connected to the upscale residential neighborhood of Neo Psychiko, home to developments like

Property Developments.

This creates a strong link between central urban living and more premium residential environments.

The neighborhood is also considered a true walker's paradise, where most daily needs can be covered on foot, from shopping and dining to services and leisure.

This rare balance of accessibility, livability, and investment potential makes the area one of the most promising locations in Athens for long-term value creation.



# AMPELOKIPI AREA

The practical, lively, and authentic side of Athens

Ampelokipoi is one of those areas in Athens that is hard to describe with just one word. It feels both busy and familiar, modern but still connected to the old urban character of the city.

The neighborhood is full of movement, with large avenues, offices, hospitals, cafés, shops, and metro stations creating a fast daily rhythm.

At the same time, behind the main roads there are quieter streets and older apartment buildings that still keep the feeling of a real neighborhood.

Ampelokipoi represents the everyday life of the city in a very authentic way.

People from many different backgrounds like students, workers, families and longtime residents live there.

The area combines convenience, accessibility, and energy while still keeping some sense of local community.



## Project Unique Selling Points ●

1. Ministry of Justice 1.2km
2. Ministry of Environment & Energy 1km
3. Ministry of Citizen Protection 1.6km
4. Embassy of the United States 1.2km
5. Athens Medical School 180m
6. Cityzen Athens Tower 304 m

## Hospitals ●

1. Laiko General Hospital 180m
2. Ippokrateio General Hospital of Athens 450m
3. Children's Hospital Agia Sophia 500m
4. Children's Hospital "P. & A. Kyriakou" 600m
5. Cancer Children Unit - Marianna V. Vardinogianni - ELPIDA 700m
6. Athens Euroclinic (private hospital) 900m
7. Agios Savvas General Oncology Hospital of Athens 950m
8. Alexandra General Hospital / Aretaieion University Hospital 1km
9. Army General Hospital 1.9km
10. Air Force General Hospital 2.3km



The area offers excellent access to a wide range of well-established healthcare facilities, making it particularly attractive for medical professionals, students, and long-term tenants.

Within walking distance, residents can reach major public hospitals such as Laiko General Hospital and Ippokrateio General Hospital of Athens, as well as leading Children's Hospitals.

The presence of specialised institutions such as the Elpida Children's Oncology Unit and Agios Savvas General Oncology Hospital of Athens further strengthens the area's medical profile

In addition, proximity to the National and Kapodistrian University of Athens Medical School and Dental School contributes to a steady flow of students and healthcare professionals.

Altogether, this concentration of medical and academic institutions supports steady rental demand and enhances the area's long-term investment potential.

# HOSPITALS

Proximity to Major Healthcare  
& Academic Institutions



# EMBASSIES

## Close to Athens' Diplomatic Axis

The area benefits from its close proximity to Kifisias Avenue, at the point where one of the city's most important diplomatic corridors begins.

Within a short distance lies the Embassy of the United States of America in Athens, while several other embassies — including those of Israel, Japan, Qatar, and additional international missions — are also easily accessible along the avenue.

This concentration of diplomatic institutions enhances the area's international character, while contributing to a strong sense of security and prestige.

For both residents and investors, proximity to this diplomatic network adds long-term value and highlights the global appeal of the location.



The area surrounding Athens Tower is widely recognized as one of the city's most important business and commercial hubs.

Home to major corporate offices, financial institutions, professional services firms, and multinational companies, it attracts a large daily workforce and plays a central role in

Athens' economic activity. The recent redevelopment of Athens Tower, combined with ongoing investment in the wider district, has further strengthened its position as a modern business destination.

Its proximity to this dynamic employment center enhances the appeal of nearby residential properties, particularly for professionals seeking convenient access to work, services, and public transportation

# ATHENS TOWER

The City's Emerging Central Business District



# PARK OF ELEFTHERIAS

## A Lively Green Spot

Park of Eleftherias is located right next to the Athens Concert Hall (Megaron Mousikis) and directly above the exit of the Megaro Moussikis Metro Station, making it one of the most accessible green spaces in the city.

During the summer months, it becomes a popular gathering spot for younger crowds who relax on the grass, creating a vibrant yet laid-back urban atmosphere.

Its combination of culture, connectivity, and everyday leisure makes it a unique green escape within the city.



Mount Lycabettus is one of the most iconic natural viewpoints in Athens, offering uninterrupted panoramic views over the city.

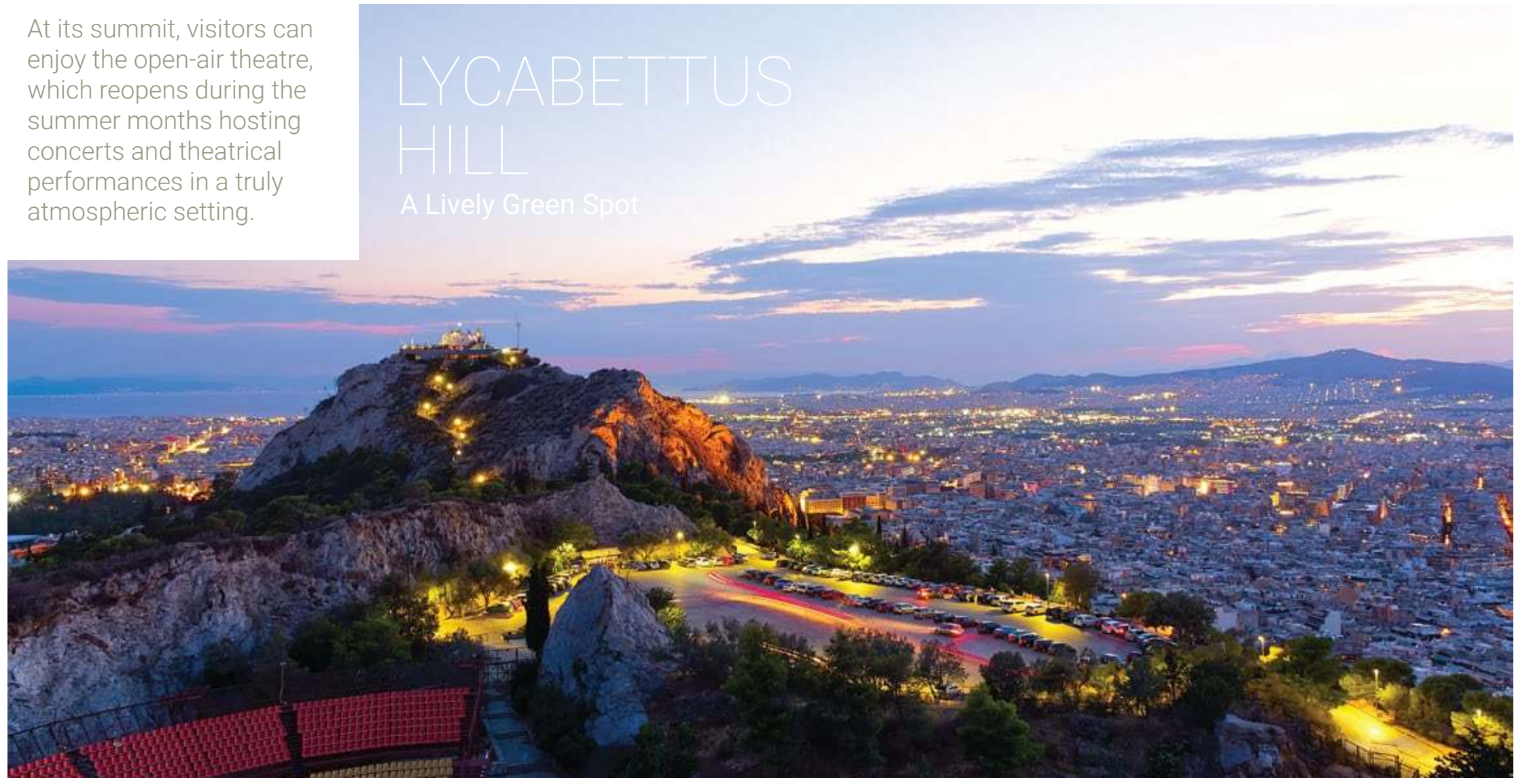
At its summit, visitors can enjoy the open-air theatre, which reopens during the summer months hosting concerts and theatrical performances in a truly atmospheric setting.

The hill also features a café with sweeping views, making it a popular spot for both locals and visitors to relax and take in the skyline.

Access to the top is available either on foot through scenic walking paths or via the funicular, offering an easy and memorable ascent to one of the city's most unique viewpoints.

# LYCABETTUS HILL

A Lively Green Spot





## Convenient Life in Athens ●

1. Airport 29.9km
2. Piraeus 14.9km
3. Eleftherias Park 1.2km
4. Lycabettus Hill 2.4km
5. National Garden of Athens 3.6km
6. Bus Stops (closest: Laiko) 220m
7. Metro Station Ampelokipi 800m (future station at Eleftherias sq., Goudi: 850m)
8. Pharmacy (closest) 130m
9. Veterinarian (Pet Zoo) 220m
10. Athens University Campus 1.44km
11. Kolonaki area 2.16km

## Super Markets: ●

1. AB Shop & Go 100m
2. AB Vasilopoulos 400m
3. Lidl 700m

## Gas Stations: ●

1. EKO 130m
2. AEGEAN 260M

## Gyms/Sports: ●

1. BodyChallenge Gym Ampelokipoi 260m
2. Martial Arts 350m
3. AFC Athens Fitness Center 400m
4. Goudi Tennis Club 900m

## Hotels: ●

1. Alba Residences Athens Orama 200m
2. Airotel Stratos Vasilikos 550m



[Online Map](#) 

# SCHOOLS / UNIVERSITIES

A Timeless Standard in Education



## Hellenic-French School Ursulines

The Hellenic-French School Ursulines is one of the oldest and most distinguished schools in Greece, with a history dating back to 1670.

It stands out for its trilingual education system (Greek-French-English), offering students a truly international academic foundation.

The school follows a holistic approach to education, combining strong academic performance with cultural, linguistic, and personal development.

This unique blend of heritage, multilingualism, and well-rounded education makes it a highly regarded choice within Athens' private education landscape.

# ATHENS UNIVERSITY CAMPUS

Home to Tens of Thousands of Students and Researchers

The Athens University Campus is one of Greece's leading academic and research centers and a major point of reference for the area.

It hosts a wide range of faculties and departments across disciplines including Science, Health Sciences, Education, Theology, and other fields of higher education.

The campus serves approximately 30,000–50,000 students at undergraduate, postgraduate, and doctoral levels, as well as researchers and academic staff, creating a vibrant environment throughout the year.

While student residences are available, they accommodate only a small proportion of the student population, supporting sustained demand for housing in the surrounding area.



# KOLONAKI

Athens' Premier Lifestyle




Kolonaki is one of Athens' most prestigious and sought-after neighborhoods, renowned for its elegant character, vibrant atmosphere, and cosmopolitan appeal.

The area is home to high-end boutiques, acclaimed restaurants, stylish cafés, art galleries, and cultural institutions, making it a key destination for both residents and visitors.

Its unique blend of business, leisure, and culture, combined with excellent connectivity to the city center, contributes to its enduring popularity and enhances the attractiveness of nearby residential properties. [

# ALBA GRADUATE BUSINESS SCHOOL



Alba Graduate Business School, located in Athens, is a leading graduate business school and part of The American College of Greece.

It offers MBA and MSc programs in fields such as finance, marketing, shipping management, and international business.

The school is accredited by the New England Commission of Higher Education (NECHE), and its MBA programs are accredited by the Association of MBAs (AMBA), ensuring internationally recognised degrees.

# MEGARON MOUSSIKIS

## Athens' Cultural Landmark

The Megaron – The Athens Concert Hall is one of the city's most prestigious cultural institutions.

Known for its world-class acoustics and impressive architecture, it hosts internationally acclaimed orchestras, opera productions, and cultural events throughout the year.

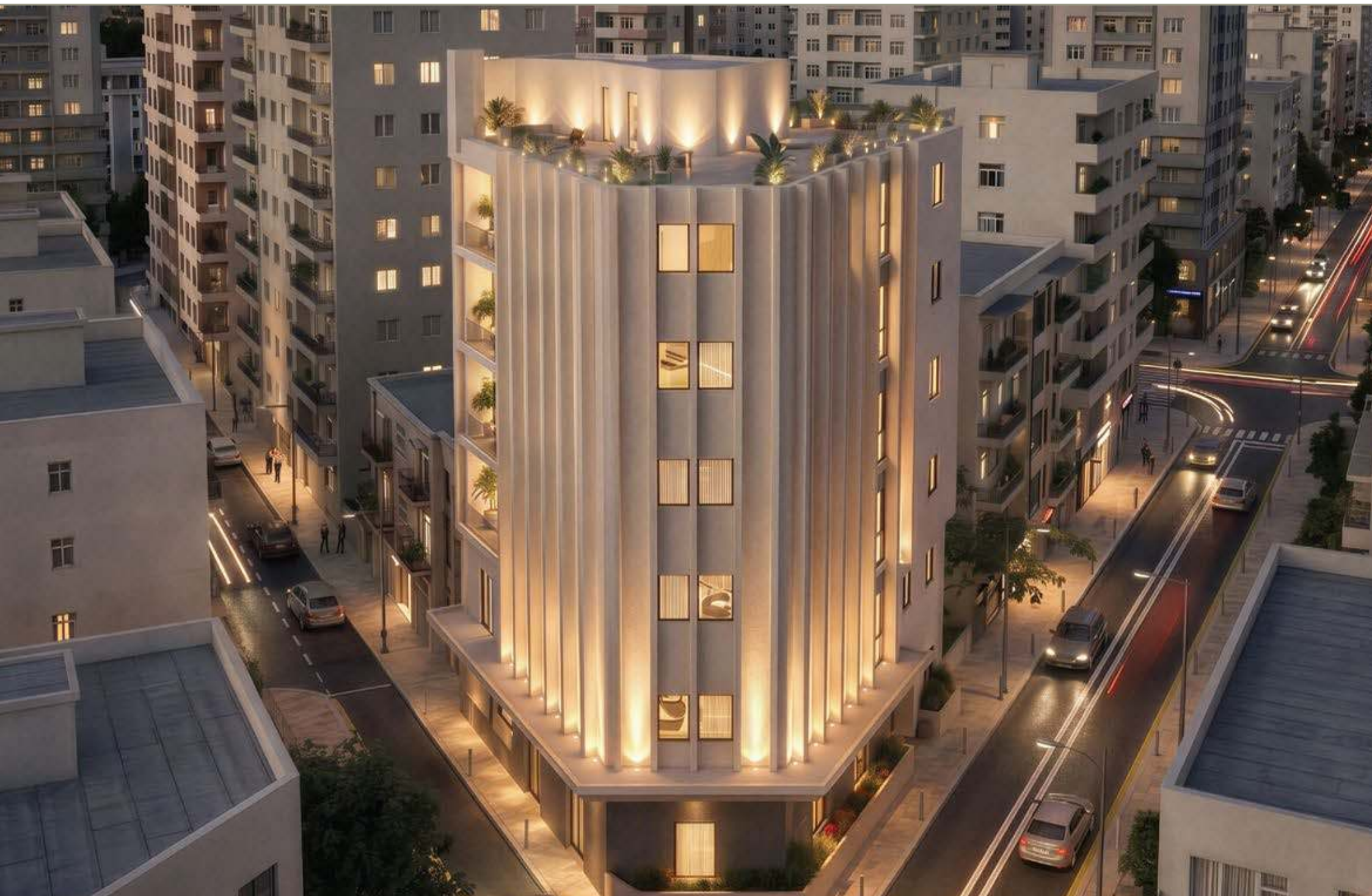
Beyond music, the venue also hosts conferences, exhibitions, and artistic performances.

Its presence enriches the cultural life of the wider area and highlights Athens' international cultural profile.

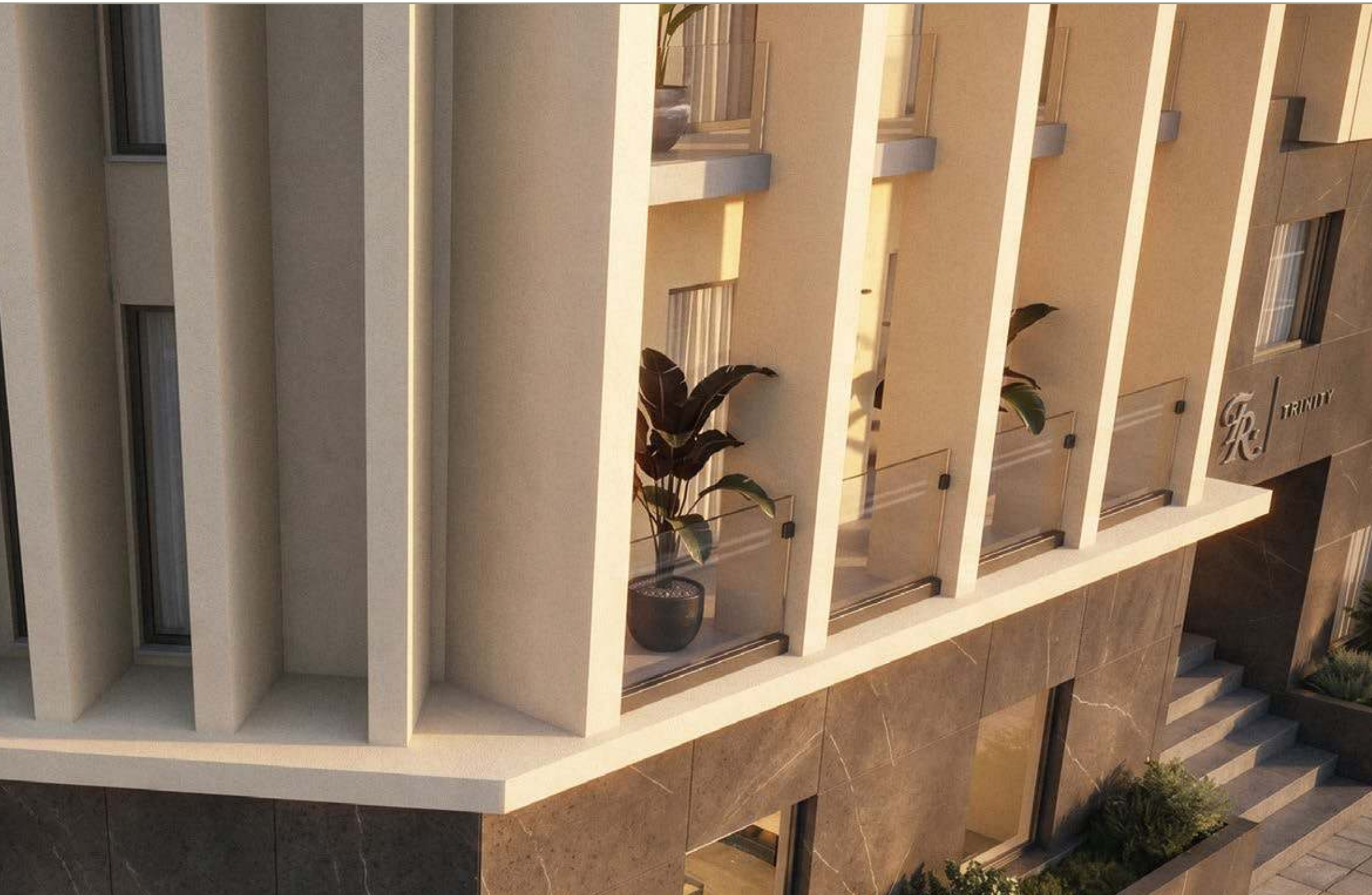


























# GROUND FLOOR



Apt	Bdrm	Internal	Balcony	Total
G1	1	40.19	12.60	52.79
G2	1	40.90	4.57	45.47
SINGLE ROOM	1	13.13	2.74	15.87



# FLOOR A



Apt	Bdrm	Internal	Balcony	Total
A1	1	31.29	5.79	37.08
A2	1	39.81	4.32	44.13



MICHALAKOPOULOU 174

# FLOOR B



Apt	Bdrm	Internal	Balcony	Total
B1	1	33.32	3.18	36.50
B2	1	32.61	5.20	37.81
B3	1	31.27	4.22	35.49



MICHALAKOPOULOU 174

# FLOOR C



Apt	Bdrm	Internal	Balcony	Total
C1	1	33.32	3.18	36.50
C2	1	32.61	5.20	37.81
C3	1	31.27	4.22	35.49



AGIOU THOMA

MICHALAKOPOULOU 174

# FLOOR D



Apt	Bdrm	Internal	Balcony	Total
D1	1	33.32	3.18	36.50
D2	1	32.61	5.20	37.81
D3	1	31.27	4.22	35.49



MICHALAKOPOULOU 174

# FLOOR E



Apt	Bdrm	Internal	Balcony	Total
E1	1	33.32	3.18	36.50
E2	1	32.61	5.20	37.81
E3	1	31.27	4.22	35.49



MICHALAKOPOULOU 174

# FLOOR F



Apt	Bdrm	Internal	Balcony	Total
F1	2	51.49	61.69	113.18



MICHALAKOPOULOU 174



F1

E2

E1

D2

D1

C2

C1

B2

B1

A1

G1

SINGLE ROOM